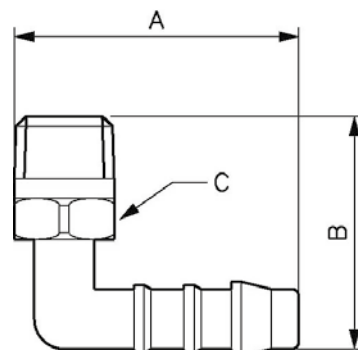


GIUNZIONI PER TUBI FLESSIBILI

Gomito maschio 90° conico



Pressione di utilizzo min/max

0 / 10 bar

Temperatura min/max

-10 / 80 °C

Codice	Filettatura	Dim. A (mm)	Dim. B (mm)	Dim. C (mm)
JPL 51804	R1/8	27	19	10
JPL 51404	R1/4	46	37	14
JPL 51806	R1/8	34	25	10
JPL 51406	R1/4	37	30	14
JPL 53806	R3/8	38	31	17
JPL 51808	R1/8	41	38	14
JPL 51408	R1/4	41	32	14
JPL 53808	R3/8	46	37	17
JPL 51410	R1/4	46	37	14
JPL 53810	R3/8	48	36	17